

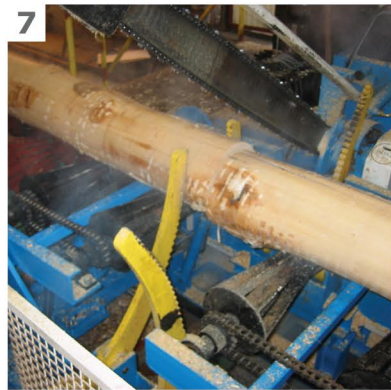
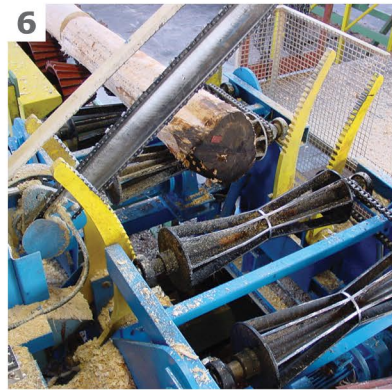


  
**PRINZ**  
KETTENSÄGETECHNIK

**LOGSTAR combi**  
STATIONARY CROSSCUT SAW FOR ROUND TIMBER







## ADVANTAGES

- Massive construction fitted to maximum load and diameter of round timber, electric engine 15 kW (photo 1).
- Efficient work of hydraulic system adapted to high working speed of complete line.
- Ergonomic steering console (photo 2).
- Stabilizer for better guiding of cutting unit, increased accuracy of cutting (photo 3).
- Automatic lubrication for optimum life-span, 5l oil tank, oil pump 0,12 kW, precise regulation of oil dose (photo 4).
- Cutting time is reduced by a control system, as for smaller diameters, the guide bar does not move as far as the upper limit position (photo 5).
- Bevel gear roller table which feeds logs and outfeeds cut beams (2 rolls each) (photo 6).
- Hydraulic clamping device holding down logs during cutting (photo 7).
- Hydraulic system which regulates height of internal rolls on both sides of the guide bar, preventing the guide bar from blocking during cutting and allowing to freely remove larger rests onto a conveyor placed under the saw (photo 8).
- Numerous safety devices increasing work safety.
- Optional systems: customized logs transporting systems, waste transporting conveyors, length and diameter measuring systems, boxes sorting cut logs according to diameter and/or length.

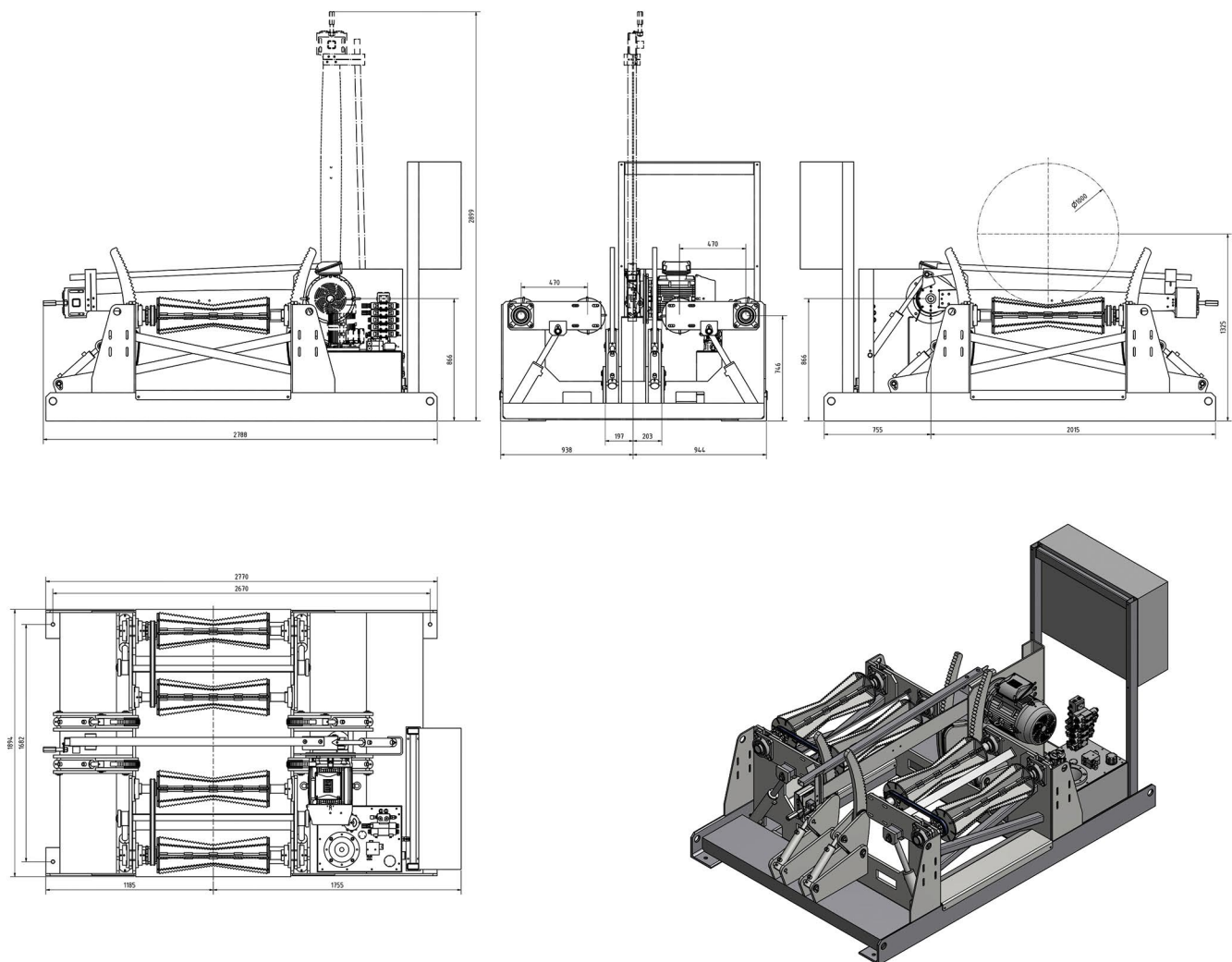


**LOGSTAR**  
hydraulic saw  
with steering console



**LOGSTAR combi**  
complete crosscut saw  
for round timber

## DRAFT WITH DIMENSIONS



dimensions in mm  
modifications reserved

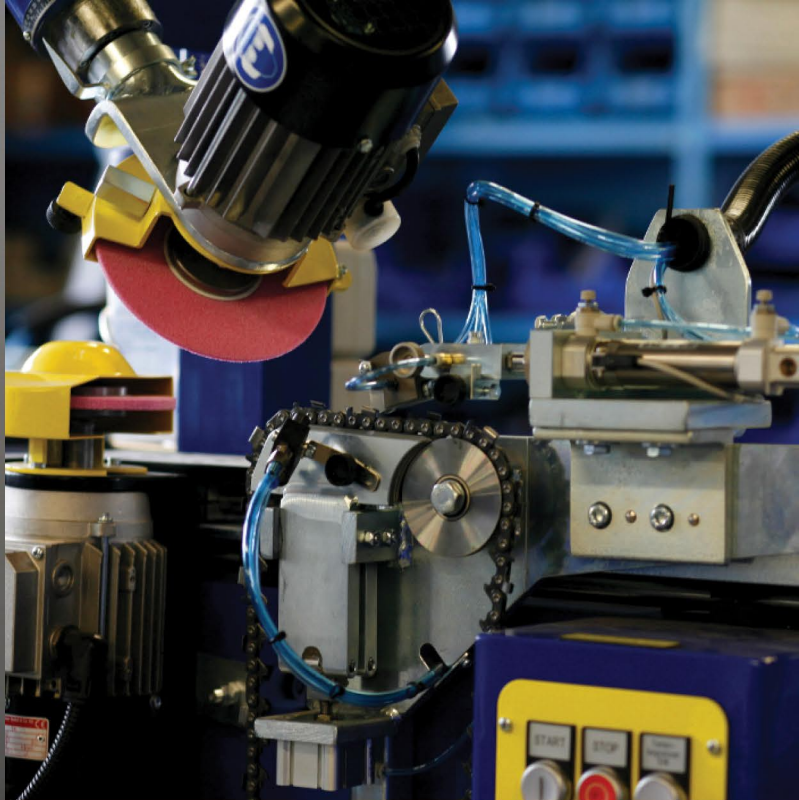
## APPLICATION

**efficient cross-cutting of logs  
with large diameters**

## TECHNICAL DATA

cut feed	hydraulic
logs transporting system	bevel gear roller table
cutting engine	3x400 V/50 Hz/15 kW/2920 rpm
max. log diameter	standard 100 cm
guide bar lengths	120, 150cm
type of chain	industrial, TIMBERCUT3/LOGMAX
guiding of the cut	stabilizer
cutting performance	approx. 18 s/m <sup>2</sup>
lubrication system	5l lubrication unit
steering system	SPS
measuring device	installed on conveyor





Cross-cut saws, based on the type of cut material, manner of cut and intensity of servicing, can be equipped with scraper saw chains for cutting packages, chipper saw chains for roundwood or carbide tipped saw chains for hard, dirty or frozen wood. Guide bars are available in high frequency hardened version or with stellite layer on one or both sides. All spare parts produced by PRINZ.

For fast and accurate sharpening of saw chains, we recommend manual sharpening device JOLLY or fully automatic SA6.

For easy and quick saw chain repair or shortening of the elongated chain, we recommend rivet breaking and riveting devices.

## all from one source: machine, cutting unit parts, service

As a leading Austrian company in chainsaw technology, PRINZ has been developing and producing crosscut saws, accessories and wearing parts for professional use since 1947. Parts like saw chains, guide bars, chain drive sprockets, pulleys are appropriate for all this kind of machines available on the market.

Machines and accessories made by PRINZ are sold successfully throughout the world. PRINZ endorses an export quota of more than 90%. In the Central and Eastern Europe, PRINZ Polska - established in 1996 - offers complex customer service. The company from Poznan (PL) provides among others guarantee and post-guarantee services, as well as the spare parts storehouse.

  
PRINZ  
KETTENSÄGETECHNIK

**PRINZ Polska sp. z o.o.**  
Chainsaw technology

PL 60-175 Poznań, Tulipanowa 4  
tel. +48 61 863 80 88, 98  
fax +48 61 863 80 99  
[www.prinz-polska.com.pl](http://www.prinz-polska.com.pl)  
[info@prinz-polska.com.pl](mailto:info@prinz-polska.com.pl)



partner: