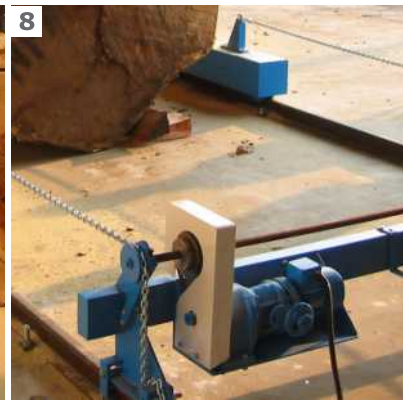
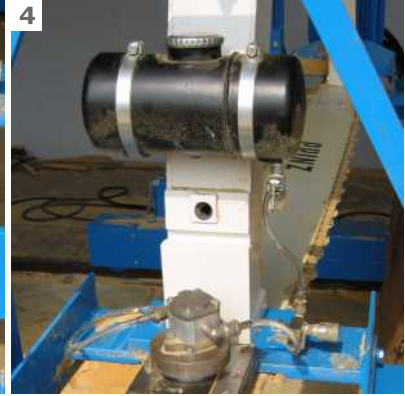
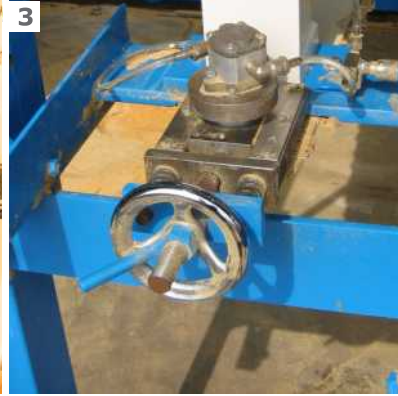
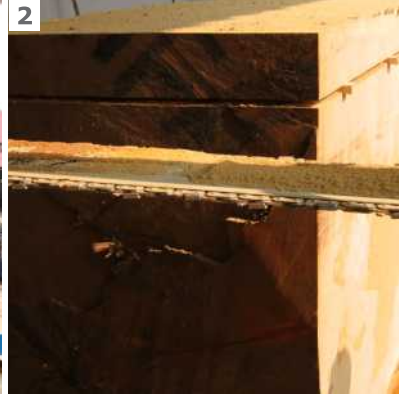





PRINZ
KETTENSÄGETECHNIK

LOG SPLITTER
HORIZONTAL CUTTING SAW
FOR ROUND TIMBER OF LARGE DIAMETERS





ADVANTAGES

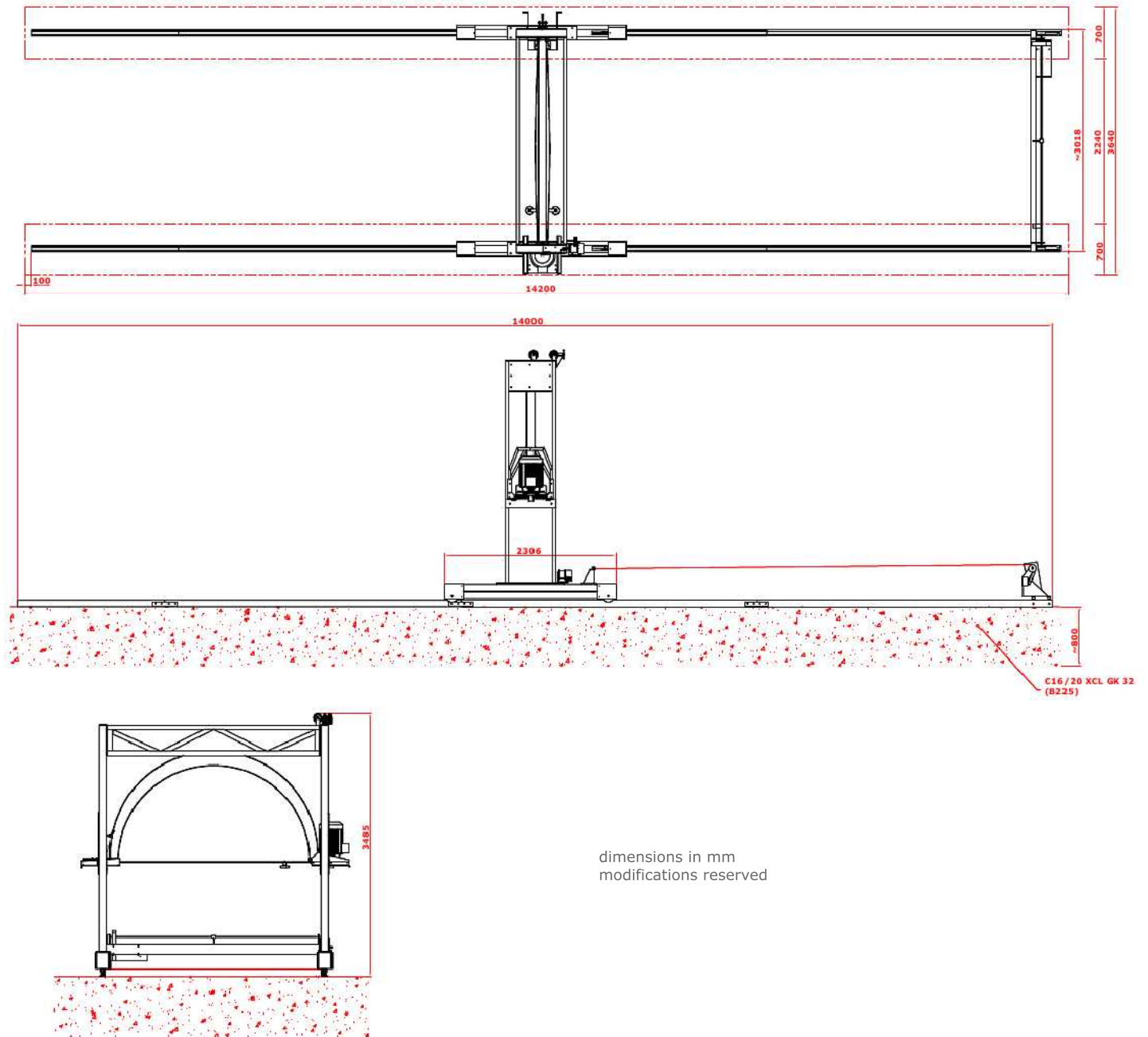
- Massive construction and solid engine for cutting of round timber of large diameters (up to 250 cm), any length and hard types of wood (photo 1).
- Suitable for the hardest work in tropical climat.
- Available with electric motor or petrol engine.
- Massive saw chain for horizontal cutting, guarantees smooth and level surface after cutting; stellite guide bar for optimum life-span (photo 2).
- Easy tension of the saw chain, shock absorbing system preventing chain from breaking (photo 3).
- Automatic lubrication of the cutting unit, gear oil pump (photo 4).
- Comfortable transmission to lower/raise the cutting unit (photo 5).
- Functional steering console, guiding together with the machine (photo 6).
- Rails of required length (photo 7).
- Driving motor of a saw with adjustable speed of guiding (photo 8).

LOG SPLITTER

SAW FOR HORIZONTAL CUTTING OF ROUND TIMBER OF LARGE DIAMETERS



DRAFT WITH DIMENSIONS



APPLICATION

**efficient horizontal cutting
of round timber of large diameters
up to 250 cm**

TECHNICAL DATA

cut feed _____ on rails, electric 0,18 kW

feed speed _____ adjustable, 0-10 m/min

electric motor _____ 3x400V / 50Hz / 15kW / 2800 rpm

petrol engine _____ ROTAX 18,5kW / twin engine

max. material diameter _____ 200/250 cm

guide bar _____ stellited, 3 mm groove, 200/250 cm length

chain type _____ TIMBERCUT 20/3

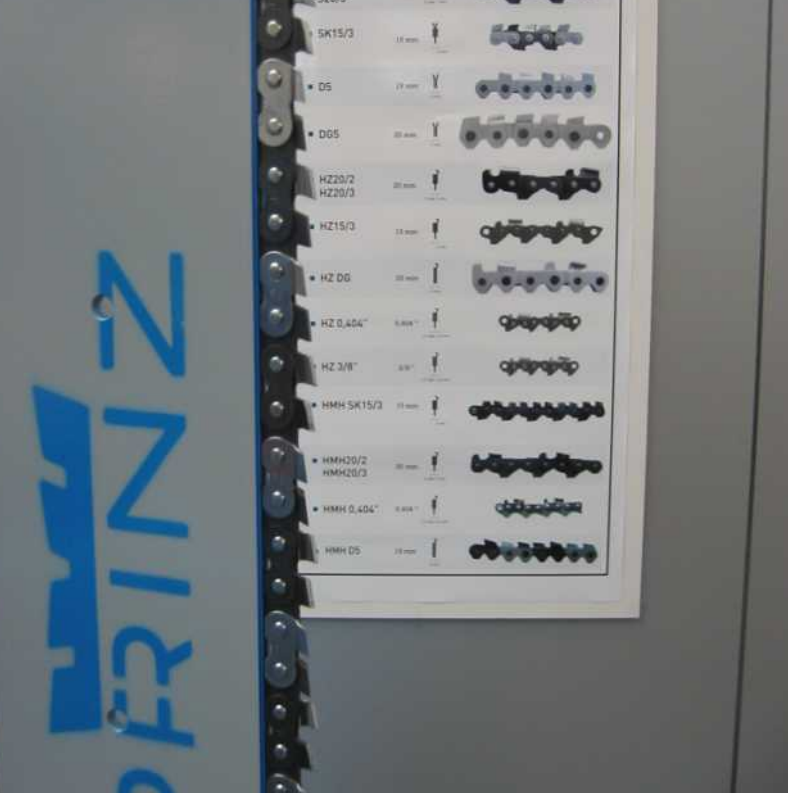
guiding of the cutting unit _____ massive welded bow

cutting efficiency _____ 1min/m²

lubrication system _____ 3l tank, gear oil pump

control system _____ contactor

measuring device _____ manual regulation of cutting height



Cross-cut saws, based on the type of cut material, manner of cut and intensity of servicing, can be equipped with scraper SZ, chipper HZ or carbide tipped HMH saw chains. Guide bars are available as high frequency hardened version or with stellite layer on one or both sides.

For fast and accurate sharpening of saw chains, we recommend manual sharpening devices UNI / JOLLY or fully automatic SA6.

For easy and quick saw chain repair or shortening of the elongated chain, we recommend rivet breaking and riveting devices.

all from one source: machine, cutting unit parts, service

As a leading Austrian company in chainsaw technology, PRINZ has been developing and producing crosscut saws, accessories and wearing parts for professional use since 1947. Parts like saw chains, guide bars, chain drive sprockets, pulleys are appropriate for all kind of machines available on the market.

Machines and accessories made by PRINZ are sold successfully throughout the world. PRINZ endorses an export quota of more than 90%. In the Central and Eastern Europe, PRINZ Polska - established in 1996 - offers complex customers service. The company from Poznan (PL) provides among others guarantee and post-guarantee services, as well as the spare parts storehouse.


PRINZ
KETTENSÄGETECHNIK

PRINZ Polska

ŁAŃCUCHOWE SYSTEMY TNAĆE

PL 60-175 Poznań, ul. Tulipanowa 4
tel. +48 61 863 80 88
fax. +48 61 863 80 99
info@prinz-polska.com.pl
www.prinz-polska.com.pl

partner: